



# Group Work as a Means of Developing Graduate Attributes at Different Levels of Study

Cornelia Junge

University of Abertay Dundee



# The Graduate Attributes

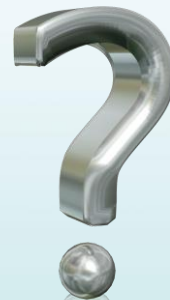
**CONFIDENT  
THINKERS**

**FLEXIBLE  
COLLABORATORS**

**GROUP WORK**

**DETERMINED  
CREATORS**

**AMBITIOUS  
ENQUIRERS**



# Case: EC0903A (3<sup>rd</sup> Year)

## Task

- 3,000 word joint work, 40% of module grade
- Groups of 3-4 students

## Process

- Choice of 4-5 case studies
- Weekly meetings for 7 weeks, submission in week 8

## Grade

- 1 grade for group's joint submission
- Peer-marking element within group

## Result

- Above-average content [and grades]
- High average level of creativity

# The Graduate Attributes: 3<sup>rd</sup> Year

**CONFIDENT  
THINKERS**

**FLEXIBLE  
COLLABORATORS**

**DETERMINED  
CREATORS**

**AMBITIOUS  
ENQUIRERS**

# Case: EC0706A (1<sup>st</sup> Year)

## Task

- 1,000 words individual CW, 40% of overall grade
- Groups of 4-5 students for continuous “feedback”

## Process

- Free choice of topic within a wide “theme”
- Weekly meetings for 7 weeks + individual support

## Grade

- Individual grade for coursework
- Short reflection on group process element

## Result

- Above-average content [and grades]
- High average level of creativity



# The Graduate Attributes: 1<sup>st</sup> Year

**CONFIDENT  
THINKERS**

**FLEXIBLE  
COLLABORATORS**

**DETERMINED  
CREATORS**

**AMBITIOUS  
ENQUIRERS**

# Case: EC1007A (4<sup>th</sup> Year)

## Task

- Individual presentation, 20% of overall grade
- Groups of 3-5 students to develop work together

## Process

- Free choice of topic within a wide “theme”
- Self-organised group meetings, on request with tutor

## Grade

- Individual grade for presentation [4<sup>th</sup> year]
- Short reflection on group process in feedback meeting

## Result

- Above-average content [and grades]
- High standard of presentation skills

# The Graduate Attributes: 4<sup>th</sup> Year

**CONFIDENT  
THINKERS**

**FLEXIBLE  
COLLABORATORS**

**DETERMINED  
CREATORS**

**AMBITIOUS  
ENQUIRERS**



# Concluding Remarks

- ❖ This is not a statistically robust study...
  - *Based on hunches, anecdotal evidence and untested questionnaires*
- ❖ Graduate Attributes' relative weight varies
  - *Across stages*
  - *But also within one mode of assessment across stages*
- ❖ Group Work is only partly about “flexible collaboration”; it can be far richer



**Thank you.**

Questions?

